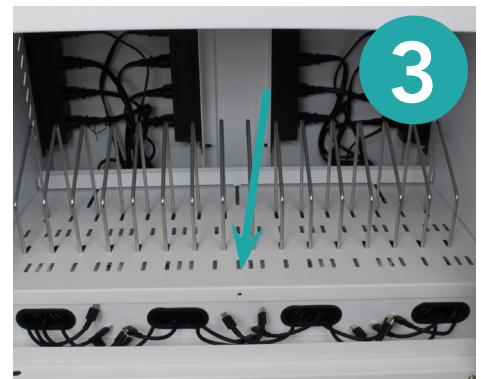
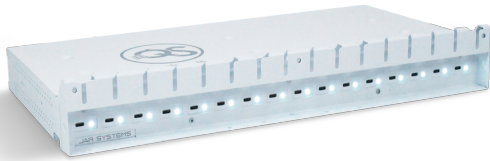


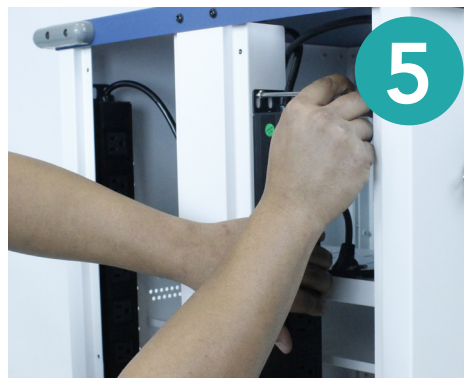
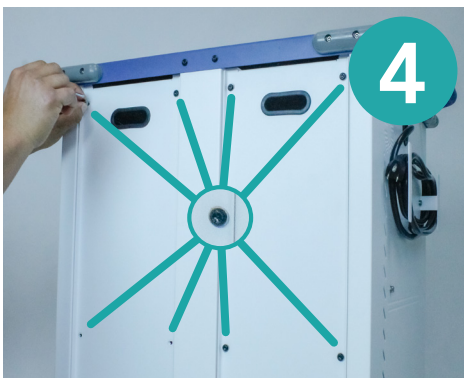
Installing a Quick-Sense USB-C Hub



The Intelligent Charging System (ICS) is located on the top of the cart. Remove the blue cover by taking out the screws on either side with the torx key. When uncovered, unplug any connected cables and drop the cables into the cart. Pieces are not used in re-assembly.

Lift the ICS up until it unclips and remove the black mounting plate, underneath the ICS, by unscrewing the two screws with the torx key. Use the blue plate included in the upgrade kit to cover the hole on top of the cart and fasten screws with torx key. Pieces are not used in re-assembly.

If the cable management tray is secured, remove the screws on the front of the lid using a torx key and place them in a secure spot to use later. Take out all of the AC adapters, the back two panels of the cart can be removed to make unplugging from the power strip easier.



Remove the four screws on either panel on the back side of the cart with the torx key. Keep the panels, screws, and washers in a safe place to reuse when putting the panels back on the cart after installation.

Once all the AC adapters are out, you can remove the power strips. The power strips are not used with the Quick-Sense USB-C Hubs so they can be removed for use elsewhere, or can remain in the station to reduce the steps in larger projects.

Locate the three screws behind the face plate of the cable management shelves. Remove screws and washers with the torx key and place aside to use in a later step. The front face plates are no longer needed with the hubs stalled.



(Optional) The tray lid can be removed to give you more space to work in the cart. Remove the screws on either side of the lid with the torx key. Place lid and screws in a safe place to put back in later steps.



Using the included wrench, remove the 2 nuts on either side of the top shelf. Once the shelf is out, remove the 2 nuts from the brackets on either side of the cart. Only the front lip of the shelf and 4 of the nuts will be reused with the hub.



Insert the USB-C Quick-Sense hub on the bottom of the cart. Line up the 3 holes on the front with the holes on the cart and secure with 3 screws and 3 washers with the torx key. Do not over tighten.



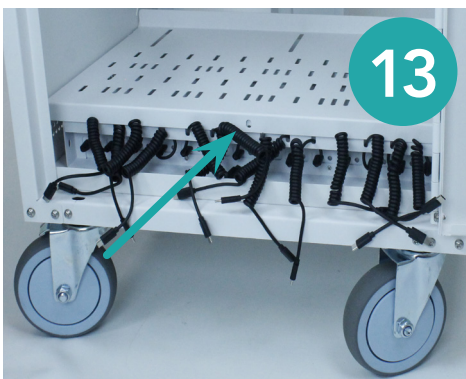
Install the included new brackets to the cart on either side using 2 nuts with the wrench. [5135: only install one bracket and keep the other close to slide into place and secure after the next step]



Insert the hub on top of the tray lip and brackets. Line up the 3 holes on all three pieces and secure with 3 screws and 3 washers with the torx key. Do not over tighten. [5135: slide bracket into place and secure before other pieces in this step]



[5150: Use the included small brackets to block the gap between the wall of the cart and the hubs. Fasten a screw and washer through the hole on the front of the hub into the bracket with the torx key.]



On both hubs, flip the USB-C cables forward, lower the lid, and secure with a screw and washer using the torx key. Cables should sit behind the lip on both shelves so they do not get caught in the door when it is closed.



Connect the USB-C hubs with the female to female power cord. Using the power cord with a male end plug it into a hub and feed it out the side hole near the bottom of the cart. Zip tie a loop and secure it with a screw and the torx key to prevent it from being pulled out.



Place the back panels of the cart back into place and secure with 4 screws each. Now the cart is ready for rapid 65W USB-C charging, just connect to power.